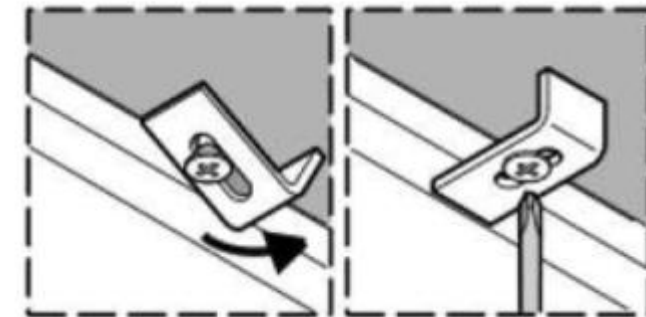


Specification

Model Number	Depth-Inches	Drain Placement
BR-1512W	7-7/8"	Central



Installation Detail



SINK DESCRIPTION

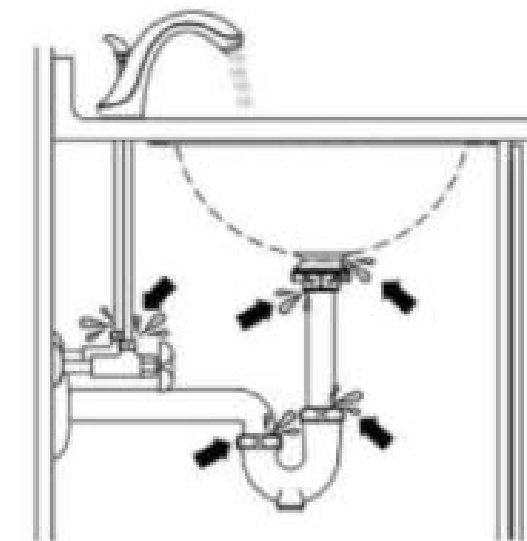
Under Counter Mounting sink

Glazing technology holds the advantage of the easy-cleaning Acid and alkali resistant with bright clean surface.

High-temperature firing makes ceramic body tight and Lower water absorption.

Without glaze needs space after, it will be more solid after fixed.

There is a overflow hole on it to prevent water from spilling over the sink.



CUTOUT DIMENSTIONS

Template included, template number BR-1512W



PRODUCT COMPLIANCE

All product certified by IAPMO to meet standards ASME A112.19.2-2018/CSA B45.1-18

WARRANTY

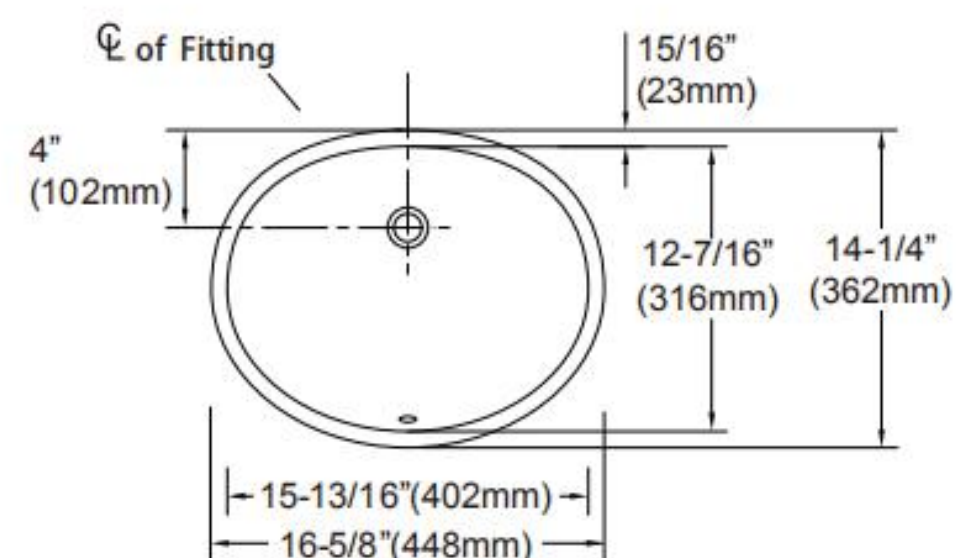
Limited lifetime warranty against material or manufacturing defects to the original consumer purchaser

CRITICAL DIMENSIONS

(DO NOT SCALE)

TECHNICAL SPECIFICATION

Installation	Under-mount
Bowl area	Length: 16-13/16" (Outside) 15-13/16" (Inside) Width: 14-1/4" (Outside) 12-7/16" (Inside) Bowl Depth: 7-7/8"
Drain Hole	1-1/4" OD
Template	Required, Included



Note:

Install this product according to the installation instruction

Minimum base cabinet size 17"

Consult an installer for confirmation.